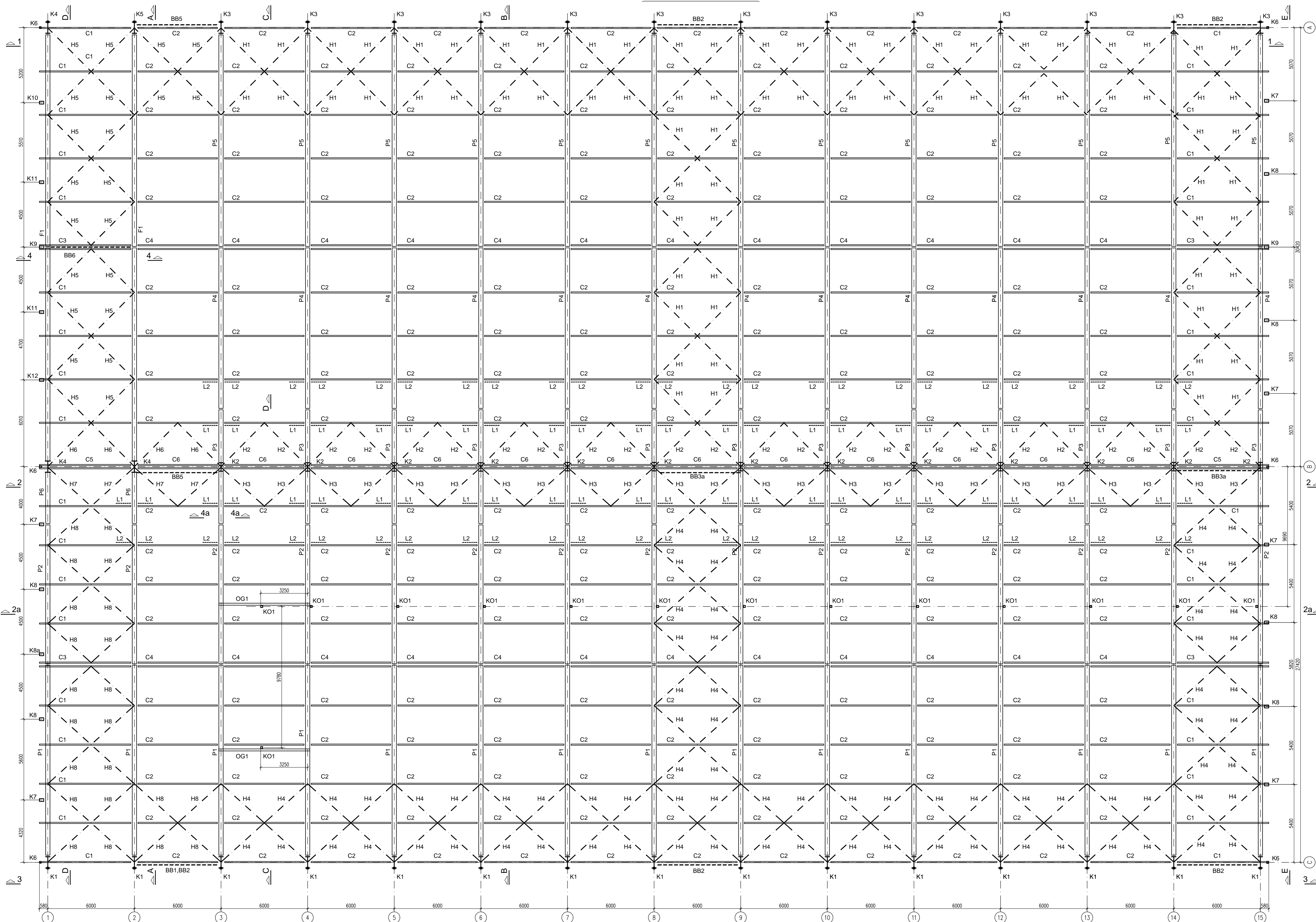


МОНТАЖЕН ПЛАН ПОКРИВ



СПЕЦИФИКАЦИЯ НА СТОМАНЕНАТА КОНСТРУКЦИЯ

SPECIFICATION OF STEEL STRUCTURE

Table with columns: Element, Marka, Section, Length, Weight, and Total. Lists items like columns (K1-K5), girders (G1-G7), and bracing (H1-H8).

Table with columns: Element, Marka, Section, Length, Weight, and Total. Lists items like girders (G1-G7), columns (K1-K5), and bracing (H1-H8).

Table with columns: Element, Marka, Section, Length, Weight, and Total. Lists items like bracing (H1-H8), columns (K1-K5), and girders (G1-G7).

Table with columns: Element, Marka, Section, Length, Weight, and Total. Lists items like internal doors, stairs, and glazing.

ЗАБЕЛЕЖКИ:

- List of notes detailing material specifications, welding requirements, and construction standards.

NOTES:

- List of notes detailing material specifications, welding requirements, and construction standards.

Project information block including project name, client, designer, scale, and date.

Общо тегло на стоманената конструкция / Total: 376106 kg

Покрытие ламарина / Roofing sheets: 37115 kg